

# DiLumen<sup>®</sup> EZ Glide Endoluminal Interventional Platform (EIP)

with EZ *Glide* hydrophilic coating

---



- ① Superior navigation.
- ② Enhanced visualization.
- ③ Stability & control.

Experience endosurgical confidence.



# Putting more possibilities for endosurgery within your reach.



## Superior navigation.

- **Inflatable two-balloon design** stabilizes the endoscope and the nearby anatomy.
- **Intraoperative conduit** enables safe and efficient access, and repeated removal of tools and tissue, without losing position.



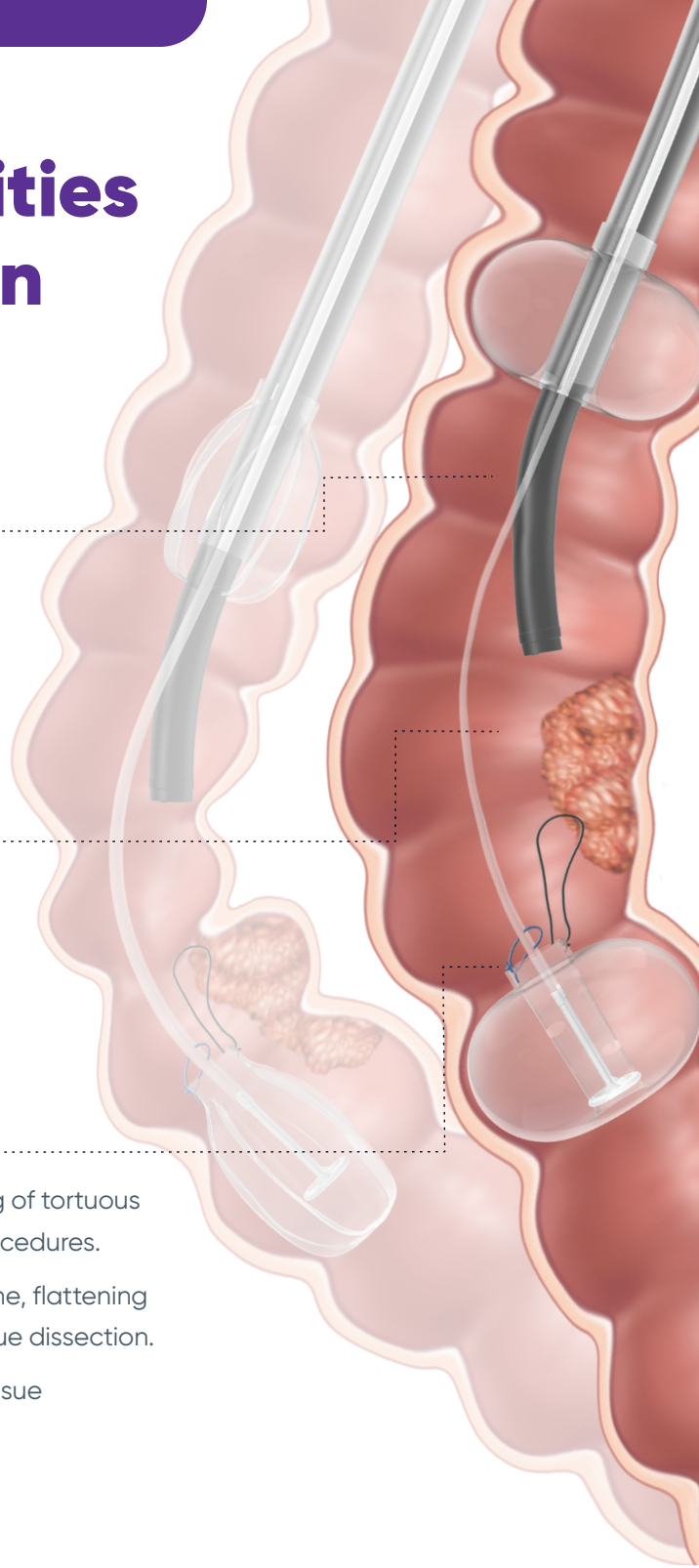
## Enhanced visualization.

- **Aft balloon** supplies gentle endoluminal positioning, helping to reveal tissue planes and expose hidden polyps within folds and flexures.
- **EZ Glide hydrophilic coating** provides a clearer, more visible therapeutic zone without messy lubricants.



## Stability & control.

- **Colon shortening** allows for safe and gentle straightening of tortuous anatomy, achieving faster access and fewer aborted procedures.
- **Extendable fore balloon** creates a stable therapeutic zone, flattening the surgical site for submucosal injection and precise tissue dissection.
- **Integrated suture system** supplies controlled, dynamic tissue manipulation and tension during procedures.



**Endoscopic  
Mucosal  
Resection (EMR)**

**Endoscopic  
Submucosal  
Dissection (ESD)**

**Complex  
Polypectomies**

**Challenging  
Colonoscopies**



# Achieve significant time savings with DiLumen.

**Superior intraoperative control. Improved endoscopic stabilization.**

DiLumen helps gastroenterologists and colorectal surgeons achieve enhanced efficiency, speed, and safety—by minimizing risk and recovery for patients otherwise destined for hemicolectomy.

See the results at [lumendi.com/dilumensavetime](https://lumendi.com/dilumensavetime).

**49.0%**

increased ESD speed<sup>1</sup>

**49.5%**

decreased ESD time  
reduction in total<sup>2</sup>

**97%**

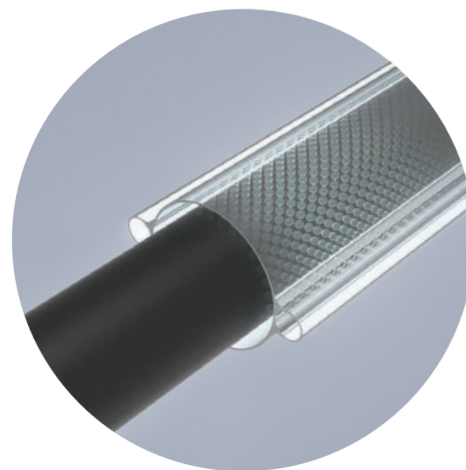
en bloc resection  
(vs 86% control group)<sup>1</sup>

**36.5%**

reduction in total  
procedure time<sup>3</sup>

## EZ Glide

Lumendi's proprietary EZ Glide hydrophilic coating creates a self-lubricating layer between the sheath and endoscope, making navigating the colon anatomy quicker and easier.



**"DiLumen EZ Glide provides me with effective and efficient access, which is why it is an essential ESD tool for me."**

Dr. Alexander Schlachterman  
Thomas Jefferson University Hospital  
Philadelphia, PA

**"DiLumen EZ Glide significantly improved our ability to remove four cecal polyps in a recent case."**

Dr. Stuart Gordon  
Dartmouth-Hitchcock Medical Center  
Lebanon, NH

# Product codes & descriptions

## DiLumen® Endoluminal Interventional Platform (EIP)

**D-1001-05:** DiLumen EIP 130cm working length (5 units/box)

**D-1001-10:** DiLumen EIP 130cm working length (10 units/box)

**D-1002-05:** DiLumen EIP 103cm working length (5 units/box)

**D-1002-10:** DiLumen EIP 103cm working length (10 units/box)



## Pioneering endosurgery.

Since 2017, Lumendi has worked with our gastrointestinal and colorectal partners to put more control in clinicians' hands. We continue to enhance the DiLumen platform to enable GI professionals to perform complex polypectomies with faster, less invasive endoluminal procedures as an alternative to laparoscopic or open surgery.

Learn more about how DiLumen is expanding what's possible in endosurgery at [lumendi.com](https://lumendi.com).

<sup>1</sup> Kantsevov, SV. A randomized prospective study evaluating effectiveness of a double balloon endoluminal platform for colorectal endoscopic submucosal dissection. Am J Gastroenterol 2020;115:S467. doi: 10.14309/01.ajg.0000705672.42930.99.

<sup>2</sup> Stavropoulos SN, Modayil R, et al. Use of the DiLumen double balloon endoscopic platform in complex colon esd results in faster ESD and faster endoscopic suturing device insertion for sutured defect. Gastrointest Endosc 2019;89(6)(suppl):AB651-AB652. doi:10.1016/j.gie.2019.03.1144.

<sup>3</sup> Kantsevov SV, Tuluvath PJ, et al. New double balloon interventional platform significantly reduces time of endoscopic submucosal dissection: Case control study of 86 patients with large sessile colonic lesions. Gastrointest Endosc 2019;89(6)(suppl): AB651. doi: 10.1016/j.gie.2019.03.1143.

